

8 CAIN STREET, NORTH BEACH

*The* **ZEPHYR**





THE ZEPHYR

*Inspired by*  
**MEDITERRANEAN**  
*calm and*  
**SIMPLICITY**

WELCOME *to beautiful*





**A PALETTE**  
*built upon a blend of*  
**HUES AND TEXTURES**  
*reminiscent of the*  
**SAND AND OCEAN.**



Spread over two levels, The Zephyr was specifically designed to maximise the potential of the site by increasing the overall useable floor area.

This home effortlessly opens and closes to its surrounds. Linked together by a central staircase, each floor creates a sense of natural hierarchy and separation to the kitchen, living, sleeping, outdoor and breakout zones.

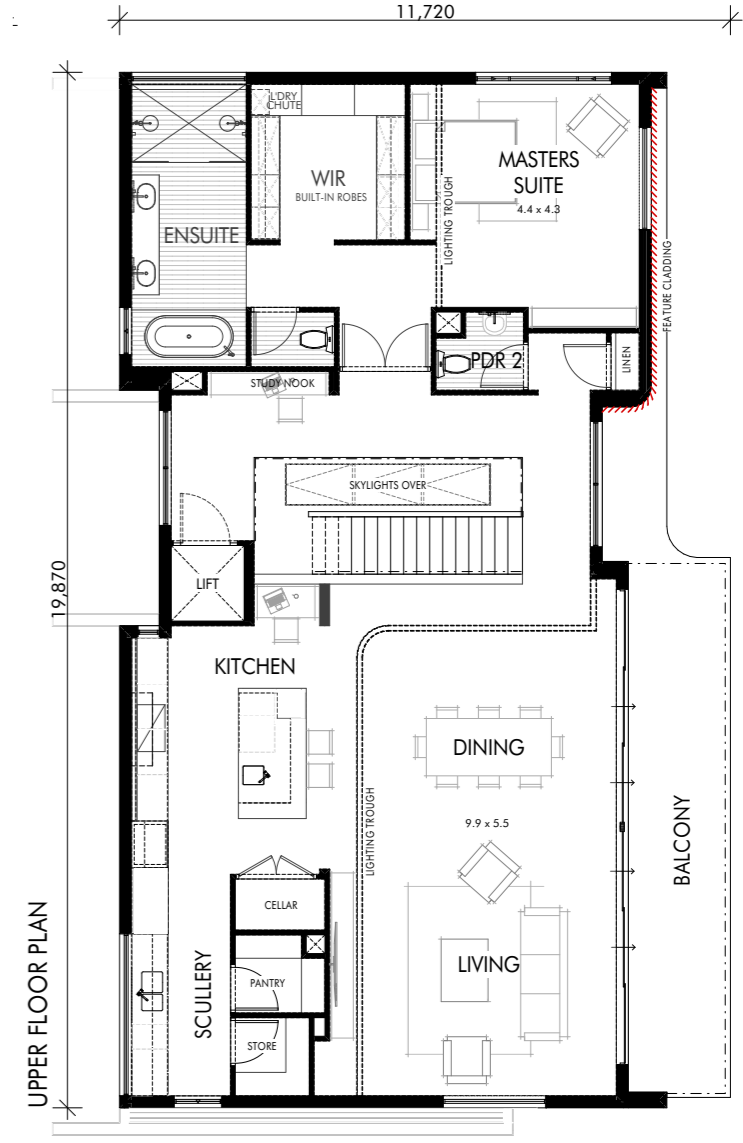
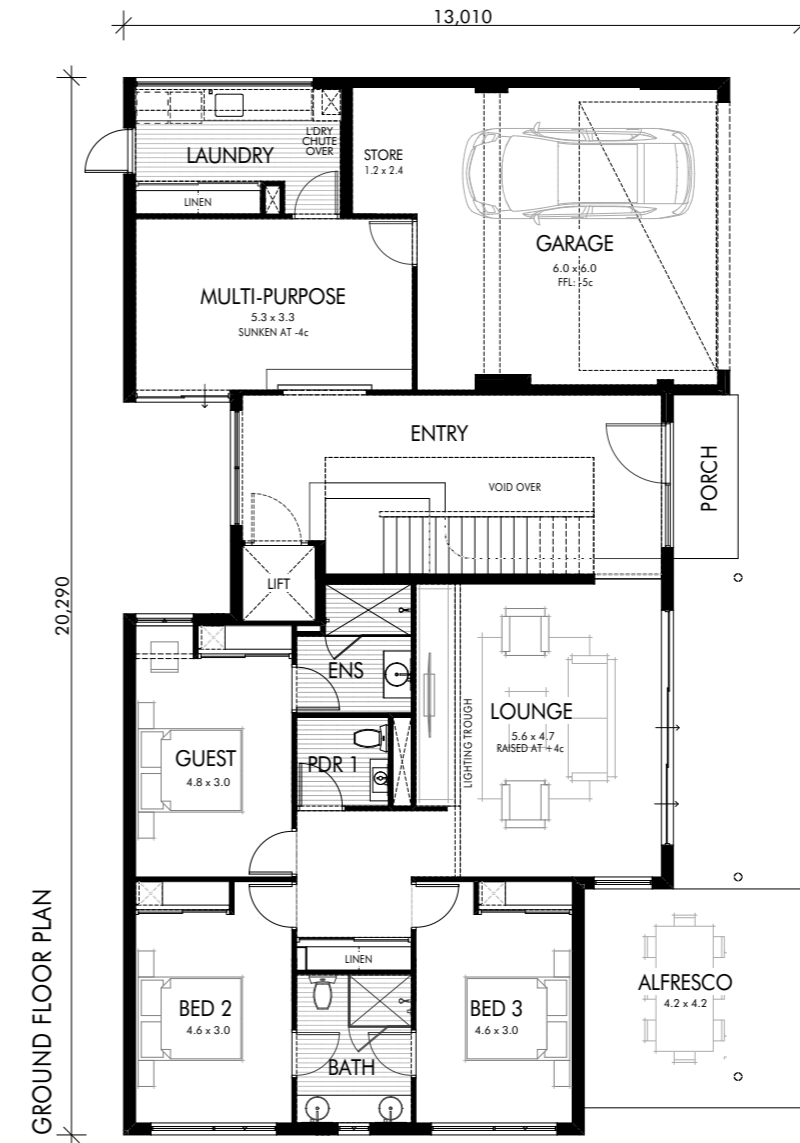




The ability to grow and evolve over time influenced how the home was designed. With optional spaces for entertaining, a multi-purpose wellness room and a choice of outdoor living zones, created a home that enables flexibility to effortlessly unfold.

A warm neutral palette and muted tones sets the scene for a shared calm. With careful integration of built and natural elements was key in balancing openness and privacy.

The Zephyr is a fitting homage to its location, showcasing the design vision of Webb & Brown-Neaves in celebrating the beauty of Mediterranean coastal living.



**THE ZEPHYR FLOOR PLAN**

**FRONTAGE 24M / TOTAL 436.82M2  
BED 4 / BATH 3**

**GROUND FLOOR 164.07 / UPPER FLOOR 191.32  
GARAGE 40.16 / BALCONY 19.89 / ALFRESCO 17.51 / PORCH 3.87**

**WELCOME** *to beautiful*

301 Vincent St, Leederville WA 6007  
P (08) 9208 9000 / [info@wbhomes.com.au](mailto:info@wbhomes.com.au)  
**[wbhomes.com.au](http://wbhomes.com.au)**

